

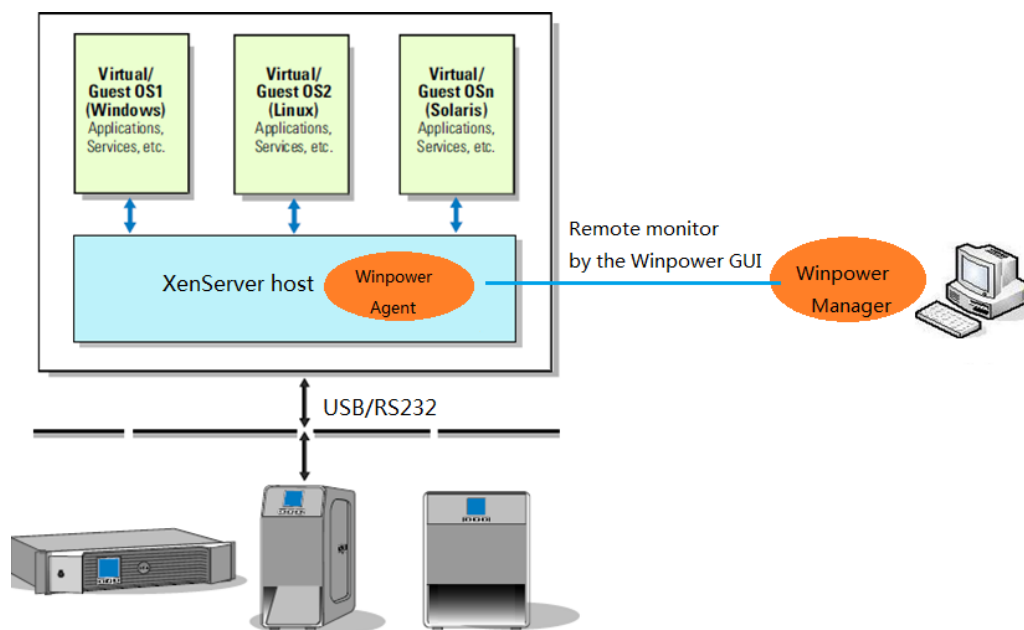
## Installation and configuration for PowerWalker-WinPower in Citrix XenServer

PowerWalker-WinPower Test version
XenServer 5.5
XenServer 6.2
XenServer 6.5

### 1. Over Viewer

PowerWalker-WinPower is installed on the XenServer host. When the shutdown condition is met, the PowerWalker-WinPower will notify the XenServer host to shutdown.

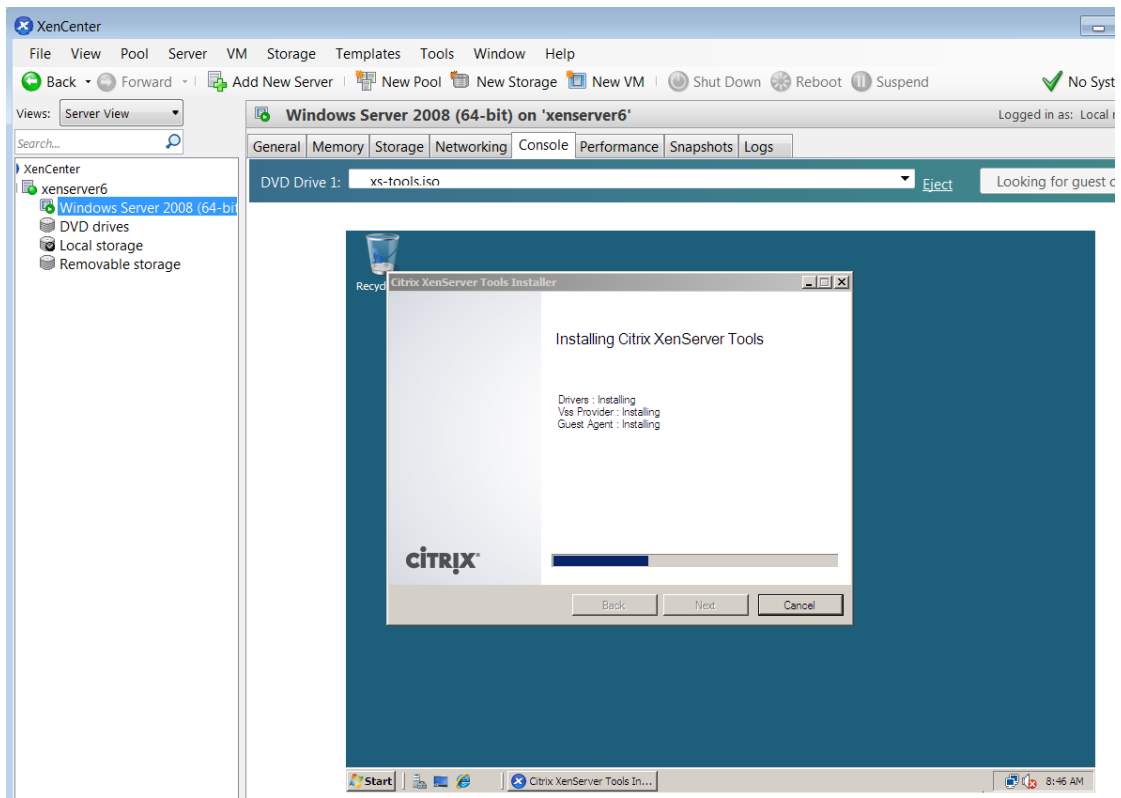
The VMs will be shut down automatically before the host shut down. ( This action takes effect as default by the XenServer )



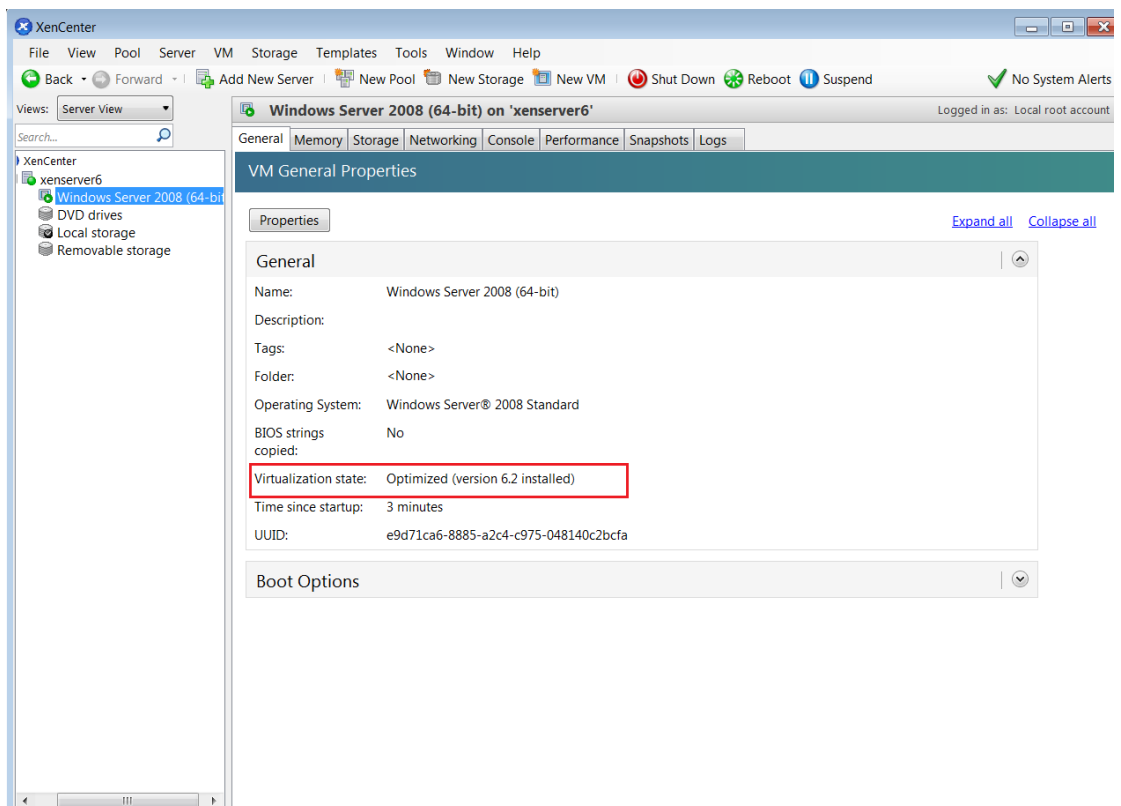
## 2 Citrix XenServer Configuration

### 2.1 Installing XenServer tools for each Virtual Machine

- Open the XenServer Client, Choose the VMs, Right click VMs, Click "Install XenServer Tools"



- The XenServer Tools is installed as below image:



## 2.2 Open XenServer host ports

- The PowerWalker-WinPower use UDP 2198/2199/2200 as the communication port with remote PowerWalker-WinPower agent
- Open the XenServer Client, click the host console, Open the UDP port by the following command:

For example:

```
iptables -I INPUT -p udp --dport 2199 -j ACCEPT
iptables -I OUTPUT -p udp --dport 2199 -j ACCEPT
/etc/rc.d/init.d/iptables save
```

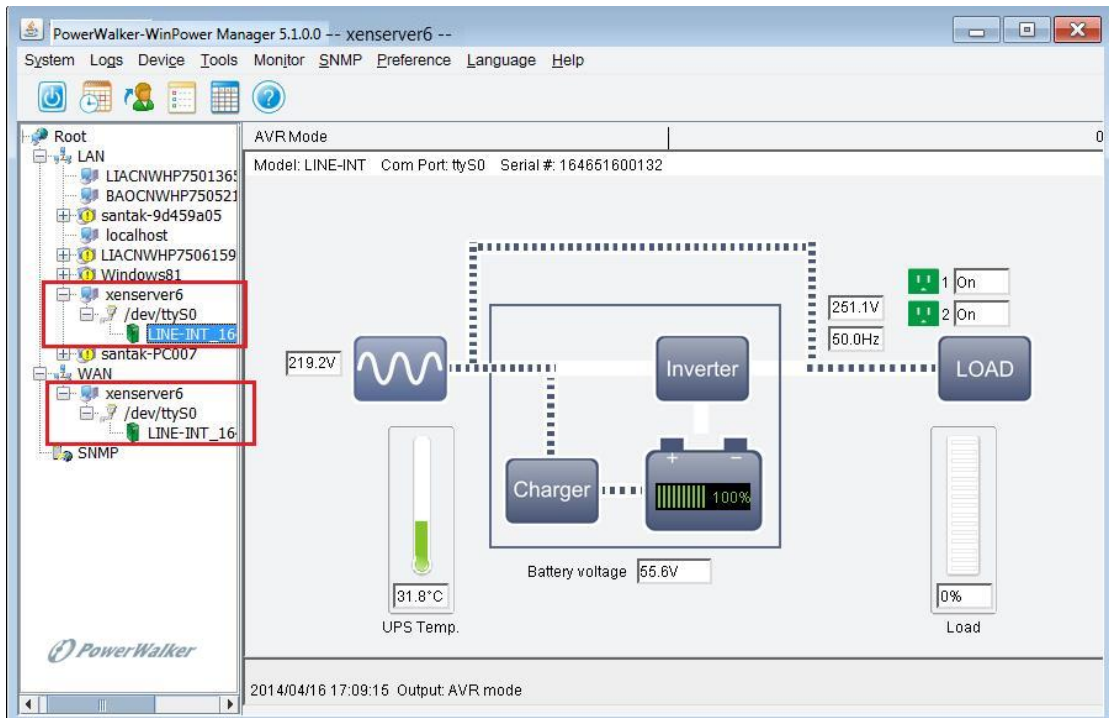
## 3 Installing and Configuring for PowerWalker-WinPower

### 3.1 Installing PowerWalker-WinPower

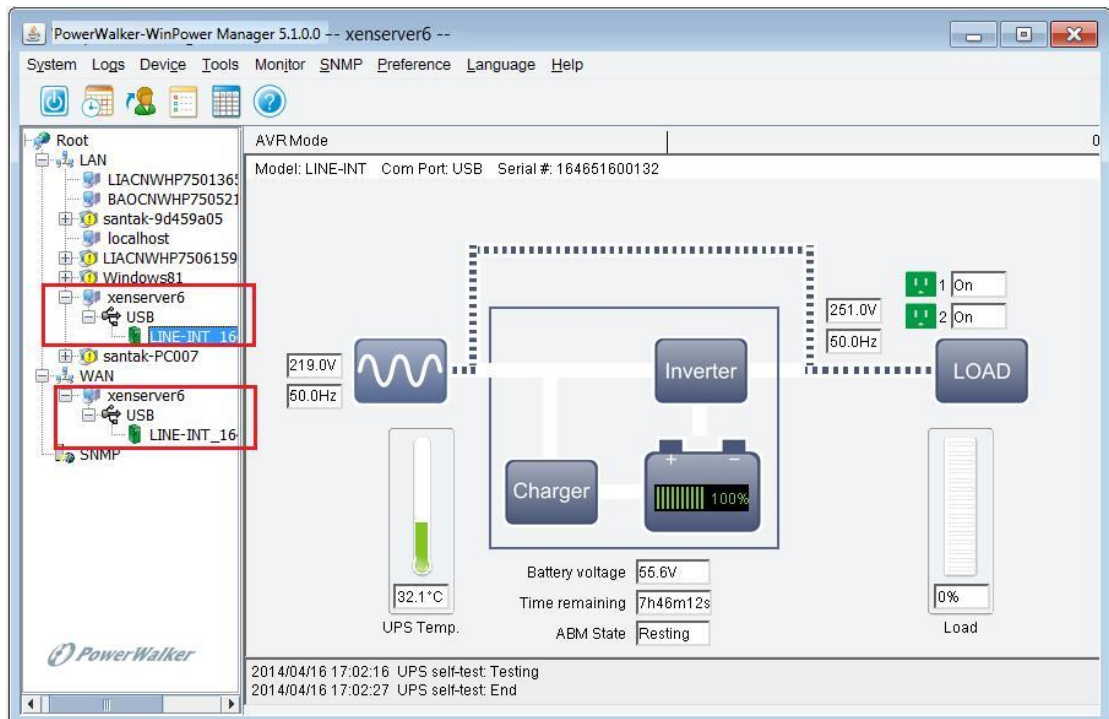
- Upload the installation file “PowerWalker\_setup\_LinuxAMD64.tar.gz” to the XenServer host using WinSCP tools
- Unzip the installation file and install the software by the command  
**tar -zxvf PowerWalker\_setup\_LinuxAMD64.tar.gz**
- Install the PowerWalker-WinPower by the command”:  
**./setup\_console.bin**

### 3.2 Configuring PowerWalker-WinPower

- Connect the UPS with Server via USB/RS232, Enter the “/opt/MonitorSoftware” directory, start the software agent by the command:  
**cd /opt/MonitorSoftware**  
**./agent start**
- For the software agent of the XenServer is CUI mode, Please set the software agent by remote software Manager (software with GUI) on the windows  
The software will search for the UPS for the first start after installing,  
If the UPS is not detected, please search for the UPS manually as following:  
Choose the software agent on the XenServer host, open the “**System**”->“**Auto Search Device**”, the UPS can be added under the LAN or WAN ( **xenserver6** is the host name of the host)



(RS232 Communication)



(USB Communication)

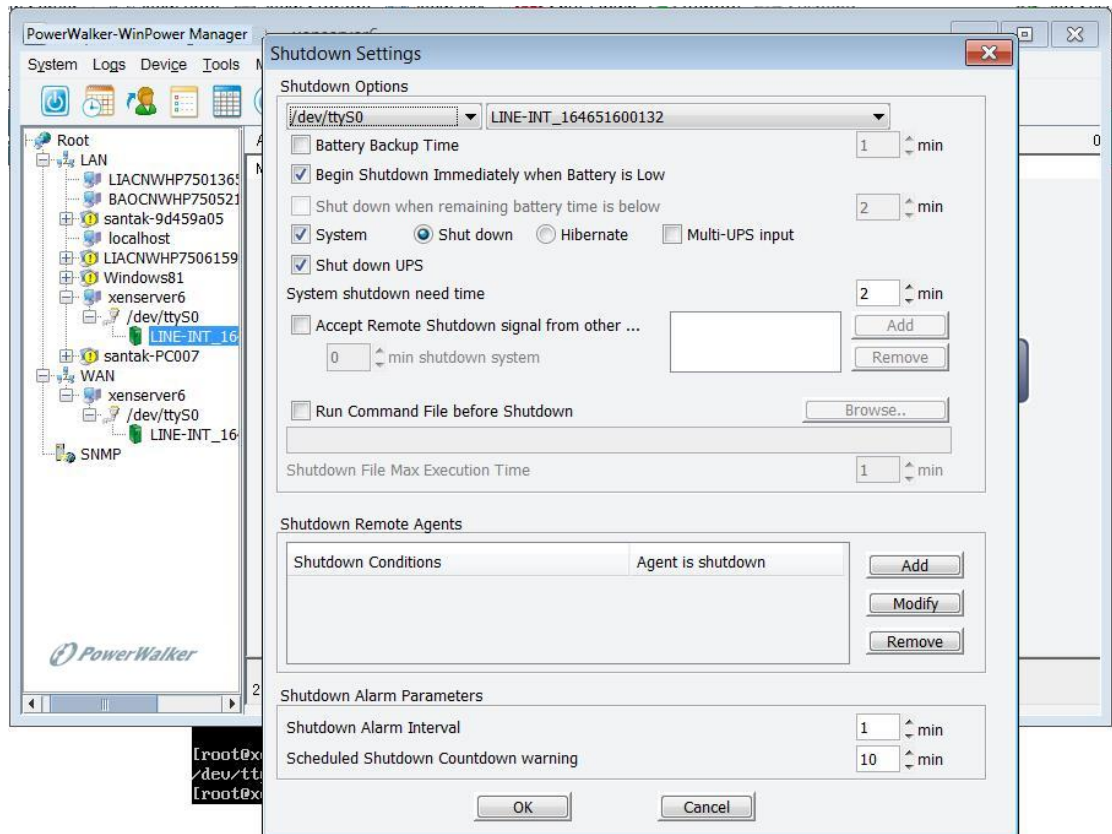
- The “/dev/ttyS0”(Serial Port 1) is captured by the system for the XenServer 5.5, not including XenServer 6.2, So the USB to RS232 can be used for the XenServer 5.5. Choose the software agent on the XenServer host, open the “System”->“Com Port Setting”, add the serial port name. The serial port name is “/dev/ttyUSB0” as default. Auto search again manually after adding the port name.

**Note:** Check the /dev/ttyS0 is used or not by the command “setserial /dev/ttyS0”.

If the /dev/ttyS0 is available, the serial port parameters can be shown as below picture:

```
[root@xenserver6 MonitorSoftware]# setserial /dev/ttyS0
/dev/ttyS0, UART: 16550A, Port: 0x03f8, IRQ: 4
[root@xenserver6 MonitorSoftware]#
```

- Choose the software agent on the XenServer host, Set the shutdown Parameter as your desire



### 3 Alarm pop up

- The alarms will pop up when the UPS power fail

xencenter server console

```
lib          S99Winpower          wpExit.lax
lib.jsp@ixPpc.so  serial              wpRMI
lib.jsp@sdx86.so  shutdownOS          wpRMI.lax
lib.jsp@pxPaRisc.sl  shutdown.sh
lib.jsp@rxMips.so  SNMPCFG.CSV
[root@localhost winpower]#
Broadcast message from root (Sat Sep  4 18:22:21 2010):

    Message: LINE-INT in /dev/ttyUSB0 input power failed!

Broadcast message from root (Sat Sep  4 18:22:21 2010):
```

xencenter server console

```
jspnw.nln      policy              Winpower_InstallLog.log
lax.jar        portConfig.rmi     wpExit
lib           S99Winpower        wpExit.lax
lib.jsp@ixPpc.so  serial              wpRMI
lib.jsp@sdx86.so  shutdownOS          wpRMI.lax
lib.jsp@pxPaRisc.sl  shutdown.sh
lib.jsp@rxMips.so  SNMPCFG.CSV
[root@localhost winpower]#
Broadcast message from root (Sat Sep  4 18:14:31 2010):

    Message: LINE-INT in USB input power failed!
```